

Architectural  
Concrete offers  
a stunning range  
of natural colours  
and textures.



---

# ARCHITECTURAL CONCRETE

---

## COLOUR RANGES

Etch Pavers

Shot Pavers

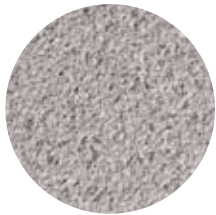
Buff Tiles

Flekk Tiles

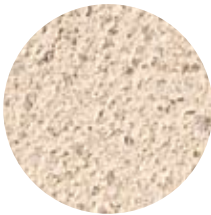
Coco + Taupe in Etch, Flax + Husk in Flekk [01]



## Range in Shot Pavers



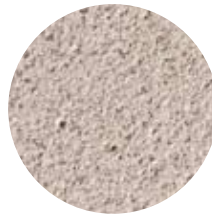
Basalt



Bronte



Cashmere



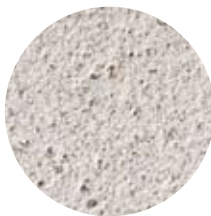
Coco



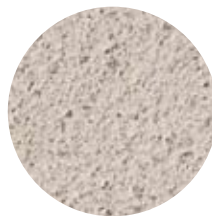
Hawkesbury



Rock



Sky

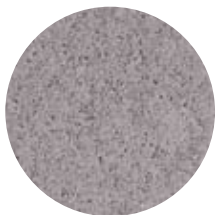


Taupe

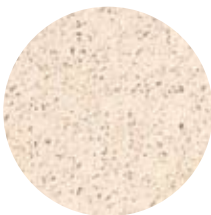


Twill

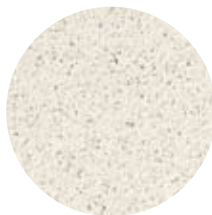
## Range in Etch Pavers



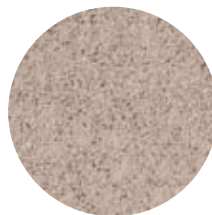
Basalt



Bronte



Cashmere



Coco



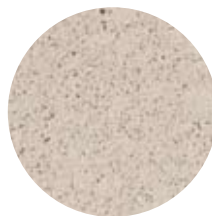
Hawkesbury



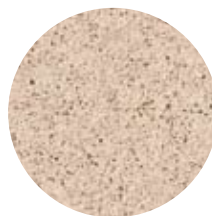
Rock



Sky



Taupe



Twill

Our range of Architectural Concrete pavers are manufactured using natural materials and therefore variations in colour can occur.

## Range in Buff Tiles

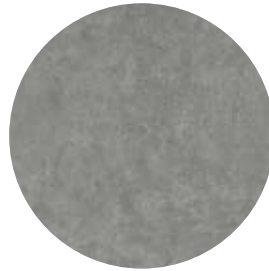
---



Flax



Husk



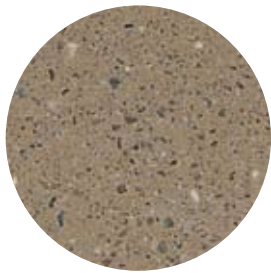
Lead



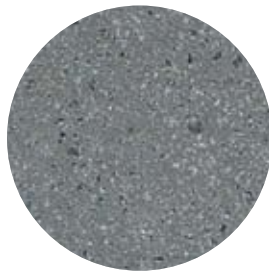
Rawhide

## Range in Flekk Tiles

---



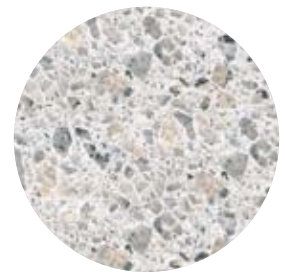
Flax




Lead



Rawhide



Husk



Taupe in Etch

#### Project Credits

- 01 Dry Spell Gardening the Lifestyle Channel
- 02 Dry Spell Gardening the Lifestyle Channel
- 03 Woods Bagot VIC
- 04 PVH NSW
- 05 Site Landscapes NSW
- 06 The Garden Company VIC
- 07 Facet Design VIC
- 08 Rolling Stone Landscapes NSW
- 09 Popov Bass architects NSW
- 10 Austin McFarland Architects NSW
- 11 Popov Bass Architects NSW
- 12 Howard Group NSW
- 13 Site Image NSW
- 14 Space Landscape Design NSW

+ Our pavers are wet cast and individually moulded resulting in a dense high quality surface finish.

Comfortable  
under foot

ARCHITECTURAL CONCRETE

+ Very durable and easily maintained

Coco in Etch



Bronte in Etch



Hawkesbury in Etch





Architectural Concrete tiles  
are super strong engineered  
concrete in its most raw form

+ Architectural Concrete tiles are precision engineered and provide a high degree of dimensional accuracy for areas with limited set down

Lead in Buff [CSC Docklands VIC] [03]



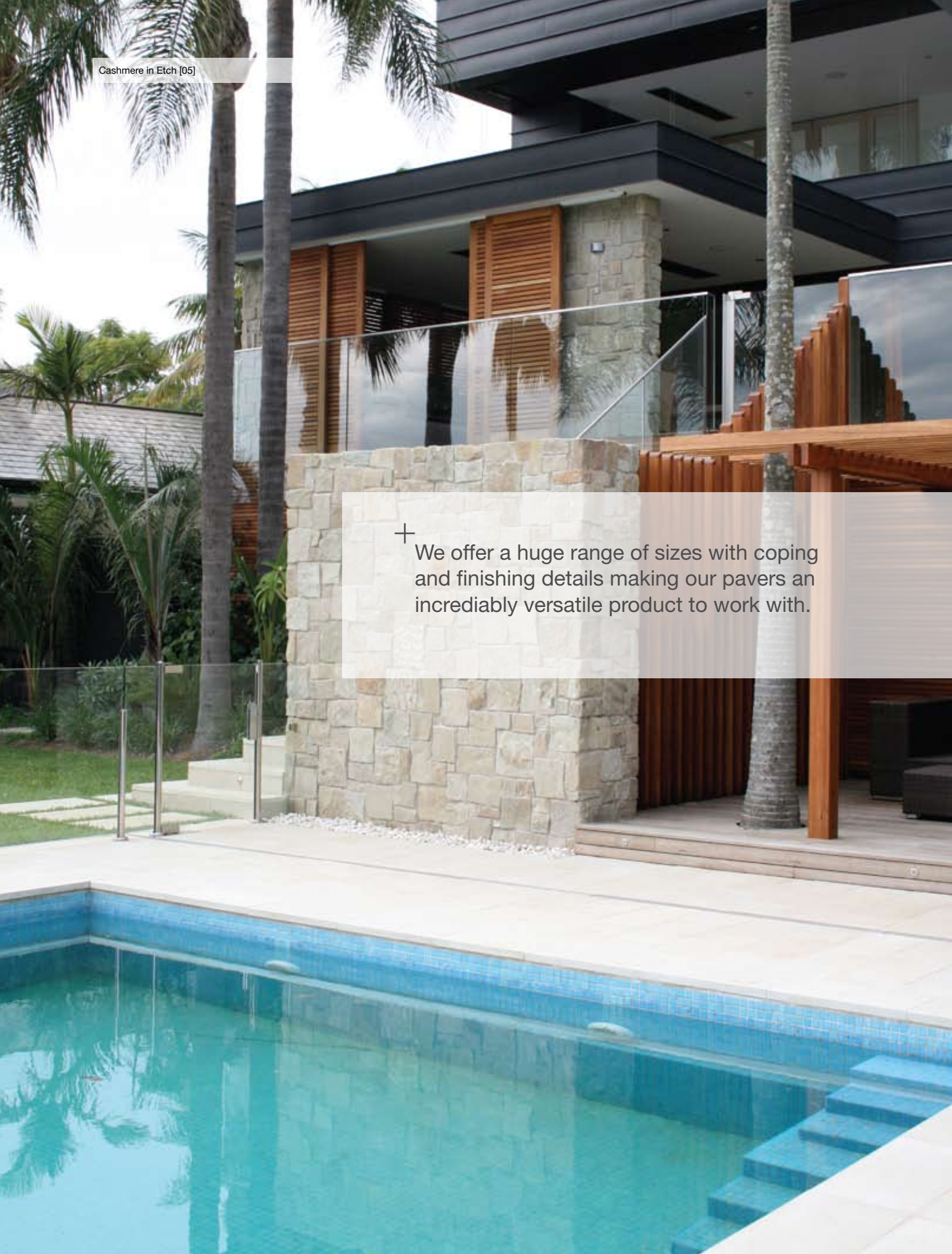
Rawhide in Buff [Holly Hunt USA]



Husk in Buff [KPMG offices NSW] [04]



+ We offer a huge range of sizes with coping and finishing details making our pavers an incredibly versatile product to work with.



## ARCHITECTURAL CONCRETE



+ Both etch and shot pavers have a non-slip finish so they're suitable for all external areas.

Top: Coco + Basalt in Etch  
Left: Rock in Etch  
Below Right: Twill in Etch



Taupe in Etch [06]



## ARCHITECTURAL CONCRETE

+ Our range of Architectural Concrete pavers offer a huge array of coping styles and are ideal for pools.

Taupe in Etch



Basalt in Etch



Taupe in Etch [07]



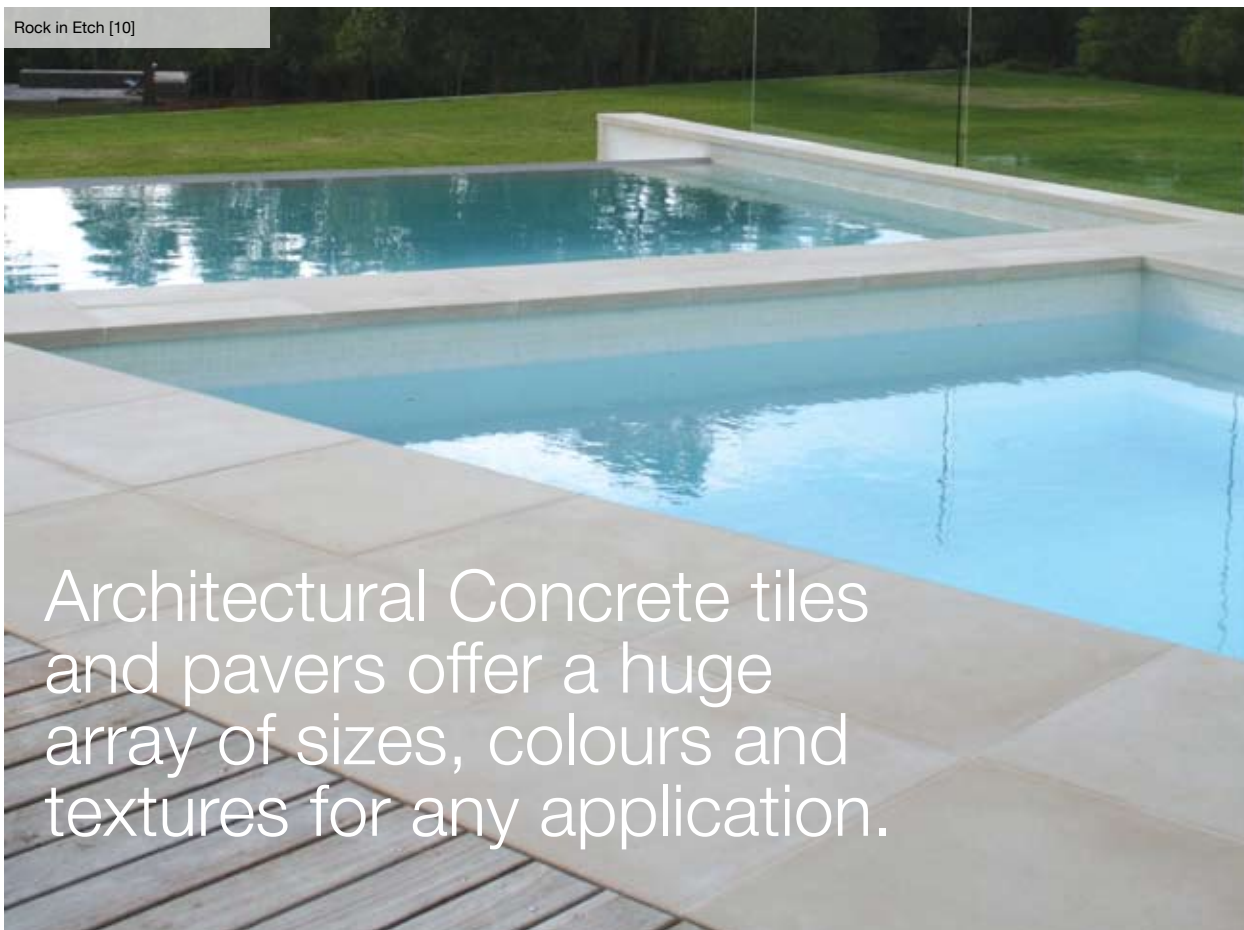




Hawkesbury in Etch



Rock in Etch [10]



Architectural Concrete tiles and pavers offer a huge array of sizes, colours and textures for any application.

Bronte in Etch

Use large  
format pavers  
for high impact



Rock in Etch



## ARCHITECTURAL CONCRETE

+ The combination of natural sands and oxides used in our pavers brings a life-like quality and tonal variation unrivalled in a man-made paver. When used in a modular pattern, this tonal variation is more pronounced.

Hawkesbury in Etch [11]



Hawkesbury in Shot [12]



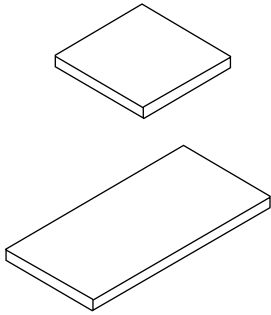
Taupe + Bronte in Etch [13]



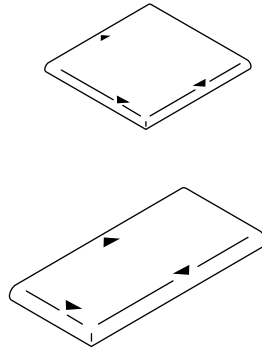
## Sizes [Pavers]

---

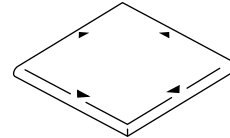
### Pavers



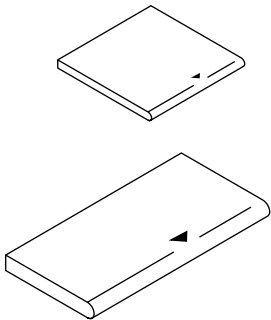
### Triple Bullnose



### Four Sided Bullnose



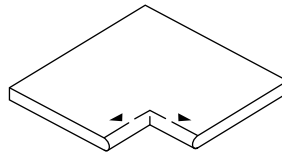
### Single Bullnose



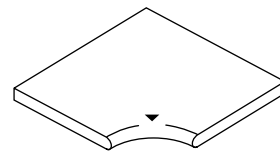

---

### Corner Bullnose

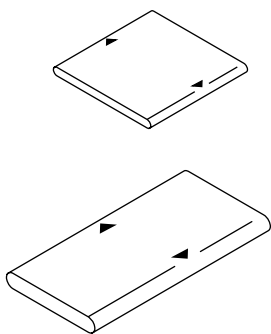
#### Right Angle Internal



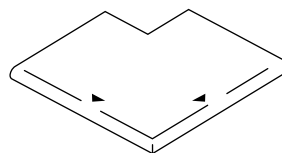
#### Radius Corner Internal



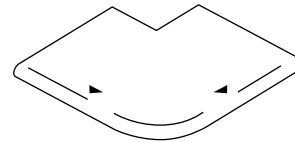
### Double Bullnose



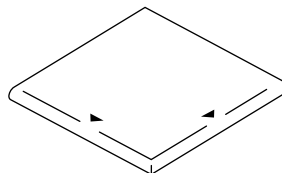
#### Right Angle External



#### Radius Corner External



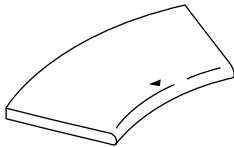
#### Right Angle External (500)



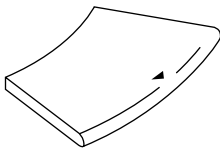
## Sizes [Pavers]

### Curved Bullnose

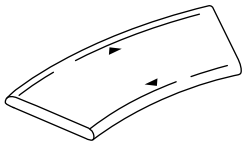
Internal



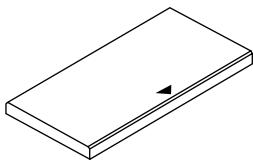
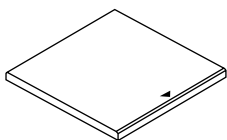
External



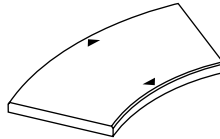
Double Curve



Square Coping

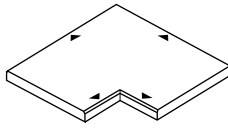


Square Curve

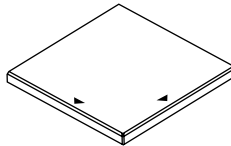


Square Corner Coping

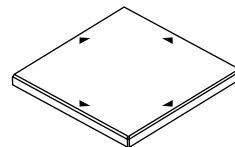
Right Angle Corner



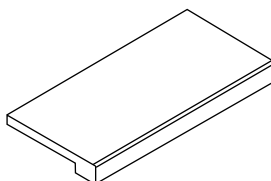
Right Angle External



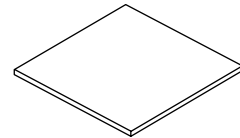
Four Sided Square Coping



Rebated Square Edge Coping



Cladding



Waterline Tiles



Paving sizes have been designed to align when using a 6 – 7mm grout joint.

These products are best laid on a wet mortar bed over a concrete slab.

Weight for 38mm paving is 80kg m<sup>2</sup>.

For further information, installation tips and pricing please call a showroom on 1300 13 14 13.

## Sizes [Pavers]

### Pavers 400 series

200x400mm, 38mm  
 400x400mm, 38mm  
 400x400mm, 48mm  
 400x600mm, 38mm  
 400x800mm, 38mm

### Pavers 500 series

250x250, 38mm  
 250x500, 38mm  
 500x500, 38mm  
 500x750, 38mm

### Pavers 600 series

300x300, 38mm  
 300x600, 38mm  
 600x600, 38mm  
 300x600, 48mm

### Large Format

375x750mm, 38mm  
 250x1000mm, 43mm  
 500x1000mm, 43mm  
 750x750mm, 48mm  
 800x800mm, 48mm  
 1000x1000mm, 48mm

### Single Bullnose

500x250mm, 38mm  
 500x350mm, 38mm  
 500x400mm, 38mm  
 500x500mm, 38mm  
 600x300mm, 38mm  
 400x400mm, 38mm  
 600x400mm, 38mm  
 750x375mm, 38mm  
 800x400mm, 38mm  
 1000x500mm, 48mm

### Double Bullnose

500x250mm, 38mm  
 500x300mm, 38mm  
 500x375mm, 38mm  
 500x500mm, 38mm

### Triple Bullnose

500x250mm, 38mm  
 500x300mm, 38mm  
 500x375mm, 38mm  
 500x500mm, 38mm

### Corner Bullnose

Radius Corner Internal,  
 150mm cutaway  
 (to suit 350mm bullnose)

Radius Corner Internal  
 200mm cutaway  
 (to suit 400mm bullnose)

Radius Corner Internal,  
 300mm cutaway  
 (to suit 350mm bullnose)

Radius Corner External  
 (to suit 350mm bullnose)

Cont...

### Corner Bullnose Cont...

Right Angle Internal  
 (to suit 350mm bullnose)

Right Angle External  
 (to suit 350mm bullnose)

Right Angle External  
 (to suit 500mm bullnose)

Four Sided Bullnose

### Curved Bullnose – Internal

350x650mm radius  
 350x1000mm radius  
 350x1300mm radius  
 350x1600mm radius  
 350x1900mm radius  
 350x2200mm radius

### Curved Bullnose – External

350x1000mm radius  
 350x1300mm radius  
 350x1600mm radius  
 350x1900mm radius

### Double Curved Bullnose

300x1000mm internal radius  
 375x1000mm internal radius  
 375x1300mm internal radius

Architectural Concrete pavers are an elegant yet practical flooring alternative. This range has been developed to provide designers with a huge range of paving options in size, shape and texture, combined with a contemporary colour palette that will suit almost all outdoor flooring applications.

## Sizes [Pavers]

### Square Coping

400x400mm, 38mm  
500x250mm, 38mm  
500x350mm, 38mm  
500x400mm, 38mm  
500x500mm, 38mm  
600x300mm, 38mm  
750x375mm, 38mm  
800x400mm, 38mm  
1000x400mm, 48mm  
1000x500mm, 48mm

### Square Coping 68mm

750x375mm, 68mm  
750x500mm, 68mm  
1000x400mm, 68mm  
1000x500mm, 68mm

### Double Square Coping

500x250mm, 38mm  
500x290mm, 38mm  
750x375mm, 38mm

### Triple Square Coping

500x290mm, 38mm

### Square Corner Coping

Right Angle Internal  
(to suit 350mm coping)  
Right Angle Internal  
(to suit 400mm coping)  
Right Angle External  
(to suit 500mm coping)  
Four sided coping

### Square Curved Coping

350x650mm internal radius  
350x1000mm internal radius  
350x1300mm internal radius  
350x1600mm internal radius  
350x1900mm internal radius  
350x2200mm internal radius

### Rebated Square Edge Coping

500x350mm, 38mm body,  
180mm face at 38mm thick  
600x350mm, 38mm body,  
100mm face at 50mm thick  
1000x350mm, 38mm body,  
180mm face at 50mm thick

### Cladding

250x500mm, 20mm  
400x400mm, 20mm  
500x500mm, 20mm

### Waterline Tiles

65x500mm, 38mm – decorative  
120x500mm, 38mm – decorative  
65x500mm, 38mm – square

### Skimmer Box

270 x 270, 38mm  
with stainless steel support

Paving sizes have been designed to align when using a 6 – 7mm grout joint.

These products are best laid on a wet mortar bed over a concrete slab.

Weight for 38mm paving is 80kg/m<sup>2</sup>.

For further information, installation tips and pricing please call a showroom on 1300 13 14 13.

## Patterns [Pavers]

### 500 Series\_Ashlar Modular Pattern

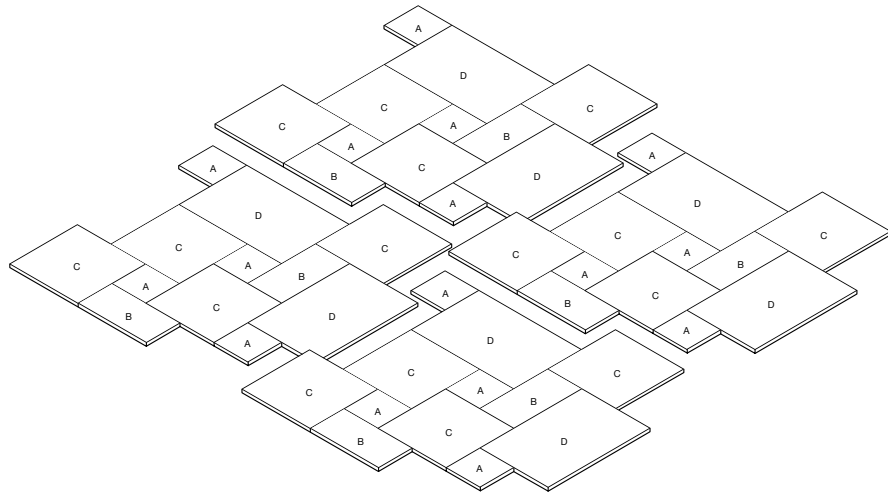
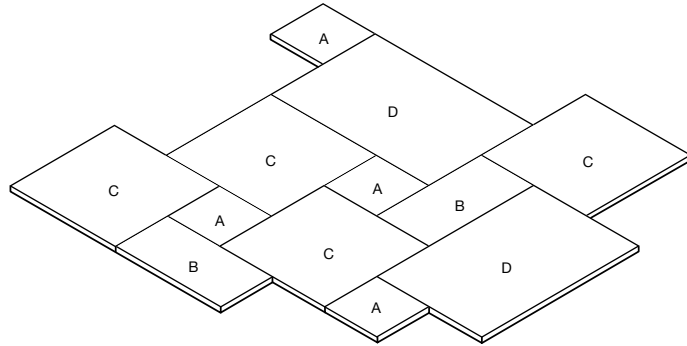
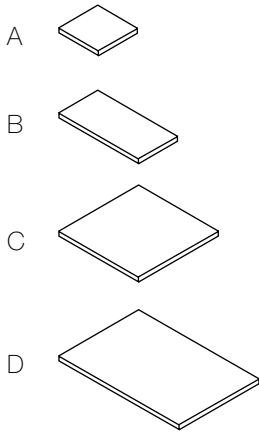
Ratio	Sizes
4	A – 250 x 250mm
2	B – 250 x 500mm
4	C – 500 x 500mm
2	D – 500 x 750mm

This pattern can be interlocked from all sides.

All tile sizes can be used separately or in varying combinations

Tile sizes have been designed to align when using a 6 – 7mm grout joint

For a download of this pattern refer to our website.



## Patterns [Pavers]

### 600 Series\_Ashlar Modular Pattern

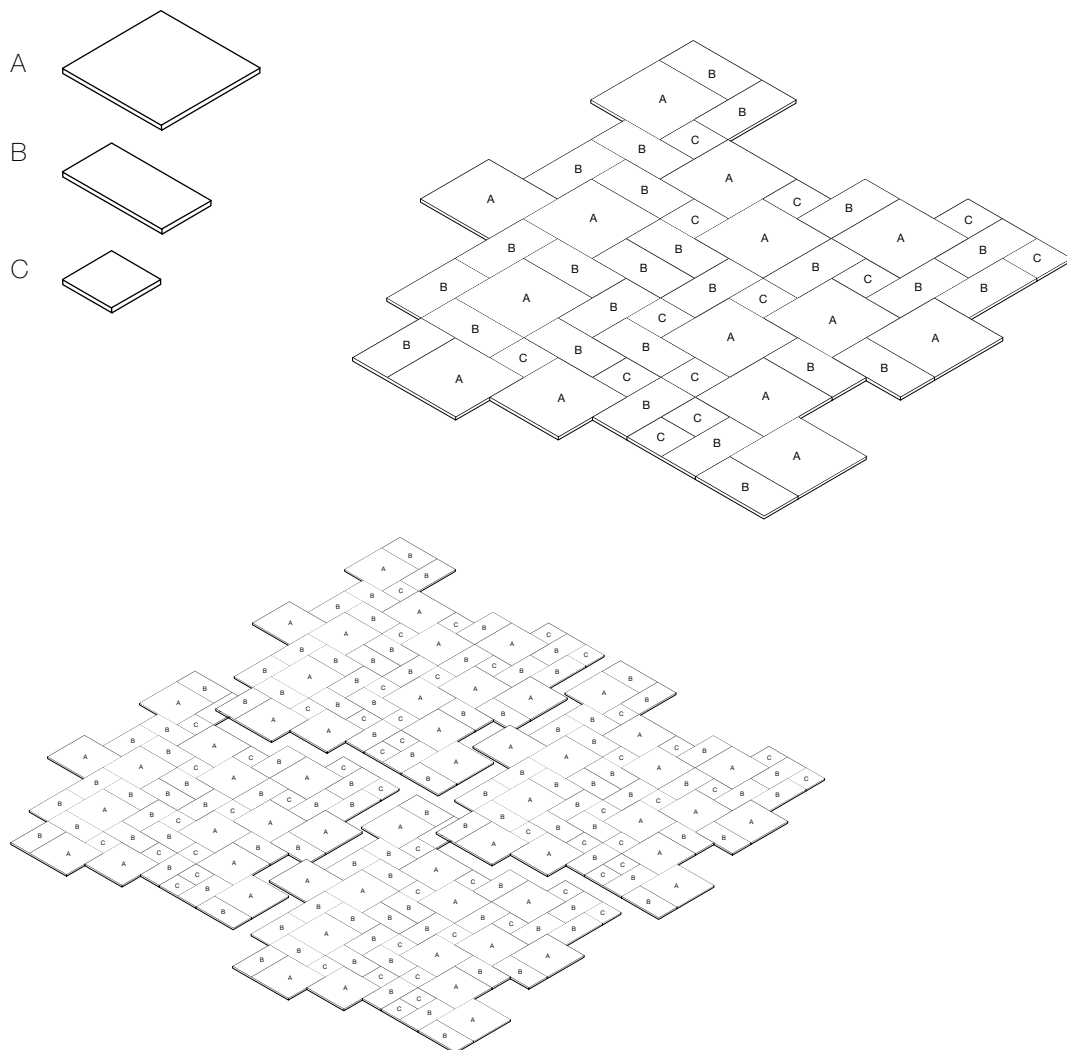
Ratio	Sizes
1	A – 600 x 600mm
2	B – 600 x 300mm
1	C – 300 x 300mm

This pattern can be interlocked from all sides.

All tile sizes can be used separately or in varying combinations

Tile sizes have been designed to align when using a 6 – 7mm grout joint

For a download of this pattern refer to our website.

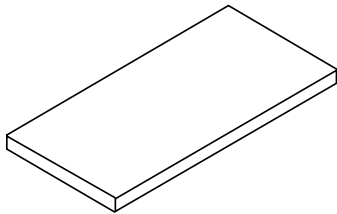
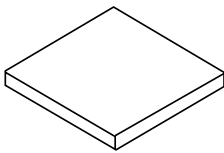


Architectural Concrete tiles present a tonal spectrum which has been developed to reflect and compliment the natural landscape. Architectural Concrete tiles offer bold clean lines and a modern aesthetic for those designs which require both precision and durability. All Architectural Concrete tiles with textured finishes are non-slip, colourfast and UV stable.

### Sizes [Tiles]

#### Tiles

395x395, 20mm  
795x395mm, 20mm  
795x795mm, 20mm



Architectural Concrete tiles are more flexible than traditional exposed aggregate tiles. The tiles are only 20mm thick and can be used in areas where there is limited set down.

Given the product is dimensionally very accurate, it can be laid over an existing concrete slab with a controlled surface finish.

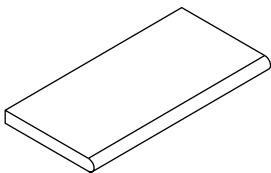
This product should be laid on a fast setting tile adhesive such as "Granirapid" by Mapei.

Other colour options can be produced on request.

For further information, installation tips and pricing please call a showroom on 1300 13 14 13.

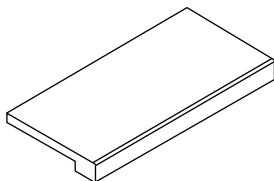
#### Pencil Edge Coping

795x395mm, 30mm



#### Rebated Square Edge Coping

795x395mm, 30mm body  
75mm face



+ For more downloadable imagery  
visit [www.ecooutdoor.com.au](http://www.ecooutdoor.com.au)

